



US00D803144S

(12) **United States Design Patent**
Schwartz

(10) **Patent No.:** **US D803,144 S**

(45) **Date of Patent:** **** Nov. 21, 2017**

- (54) **PORTABLE TOW APPARATUS**
- (71) Applicant: **Benjamin Samuel Schwartz**, Putney, VT (US)
- (72) Inventor: **Benjamin Samuel Schwartz**, Putney, VT (US)
- (**) Term: **15 Years**
- (21) Appl. No.: **29/576,576**
- (22) Filed: **Sep. 6, 2016**
- (51) **LOC (10) Cl.** **12-16**
- (52) **U.S. Cl.**
USPC **D12/408**
- (58) **Field of Classification Search**
USPC D12/162, 400-414; D21/668; D34/28, D34/33
CPC B61B 11/002; B61B 11/004; B61B 12/02; B61B 12/10; B61B 12/127
See application file for complete search history.

- 3,826,323 A * 7/1974 Mehne A63C 5/085 180/180
- 3,886,888 A 6/1975 Parsons
- 4,023,502 A * 5/1977 Elsing B61B 11/00 104/173.2
- D278,754 S * 5/1985 Andersson D34/33
- 4,611,542 A * 9/1986 Pivarunas B61B 11/002 104/173.2
- 4,920,892 A * 5/1990 Pesek B61B 12/02 104/173.2
- 5,205,219 A * 4/1993 Groskreutz B61B 11/002 104/173.2
- D347,721 S * 6/1994 Carter, Jr. D34/28

(Continued)

Primary Examiner — Darlington Ly
(74) *Attorney, Agent, or Firm* — Ash Tankha; Lipton, Weinberger & Husick

(57) **CLAIM**

The ornamental design for a portable tow apparatus, as shown and described.

DESCRIPTION

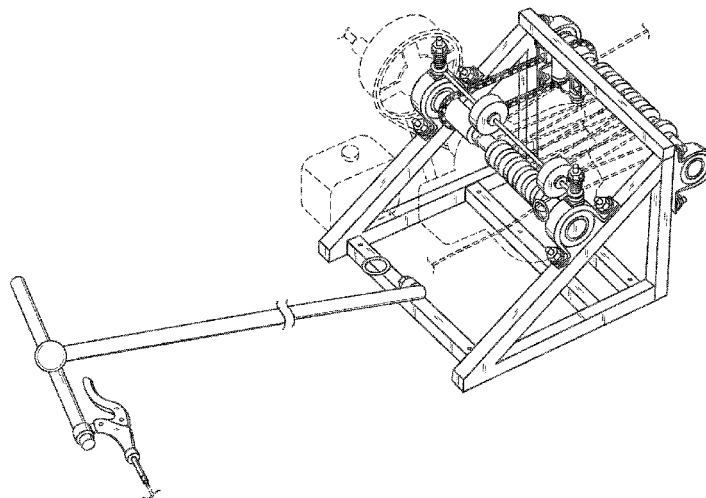
FIG. 1 is a rear perspective view of an ornamental design for a portable tow apparatus;
 FIG. 2 is a bottom view thereof;
 FIG. 3 is a top plan view thereof;
 FIG. 4 is a rear elevation view thereof, showing a sectional view of a control shaft of the portable tow apparatus taken along a section A-A in FIG. 3;
 FIG. 5 is a front elevation view thereof;
 FIG. 6 is a left side elevation view thereof; and,
 FIG. 7 is a right side elevation view thereof.

The broken line showing of an engine assembly inside a frame of the portable tow apparatus, a gear drive positioned on the upper right side of the frame, a fuel tank positioned below the gear drive, and a rope wound alternately within grooves of the portable tow apparatus in FIGS. 1-7, is for the purpose of illustrating environment and forms no part of the claimed design.

(56) **References Cited**
U.S. PATENT DOCUMENTS

- 2,079,491 A * 5/1937 Cooke B61B 12/12 104/202
- 2,608,935 A * 9/1952 Moore B61B 11/002 104/173.2
- 2,646,005 A * 7/1953 Swenson B61B 11/002 104/169
- 3,315,914 A * 4/1967 Turner B61B 12/10 242/390.1
- 3,405,651 A * 10/1968 Harmon B61B 7/06 104/173.2
- 3,473,486 A * 10/1969 Harmon B61B 7/06 104/173.2
- 3,739,728 A * 6/1973 Thompson B61B 11/00 104/173.2
- 3,779,171 A * 12/1973 Littlehorn, Jr. B61B 12/10 104/173.2

1 Claim, 7 Drawing Sheets



(56)

References Cited

U.S. PATENT DOCUMENTS

5,415,106	A	5/1995	Groskreutz et al.	
6,295,936	B1 *	10/2001	Dahlstrom	B61B 11/004 104/173.2
D556,420	S *	11/2007	Trihey	D34/33
7,581,715	B2	9/2009	Ball et al.	
8,746,148	B1 *	6/2014	Niedermeyer	B61B 7/02 104/117
2008/0083363	A1	4/2008	Hart	

* cited by examiner

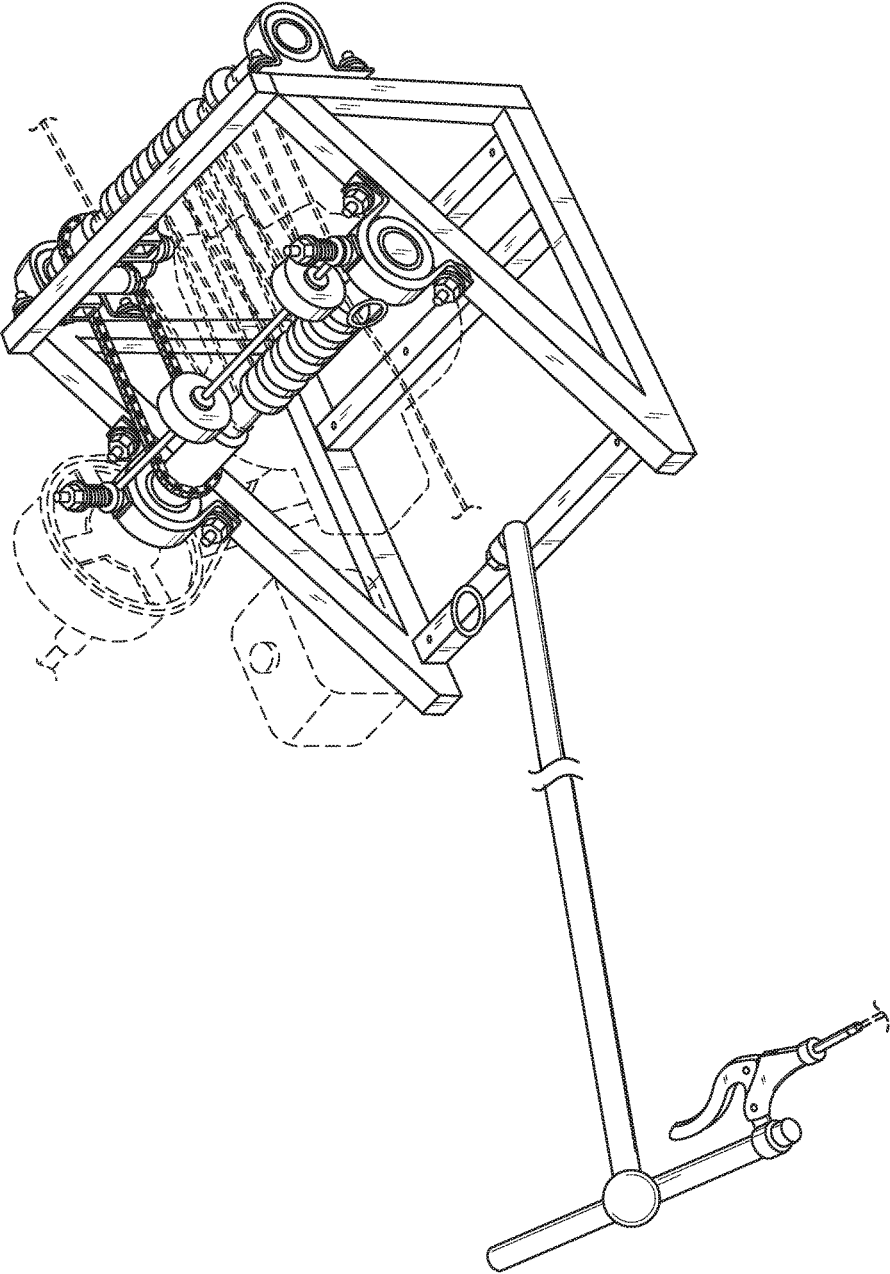


FIG. 1

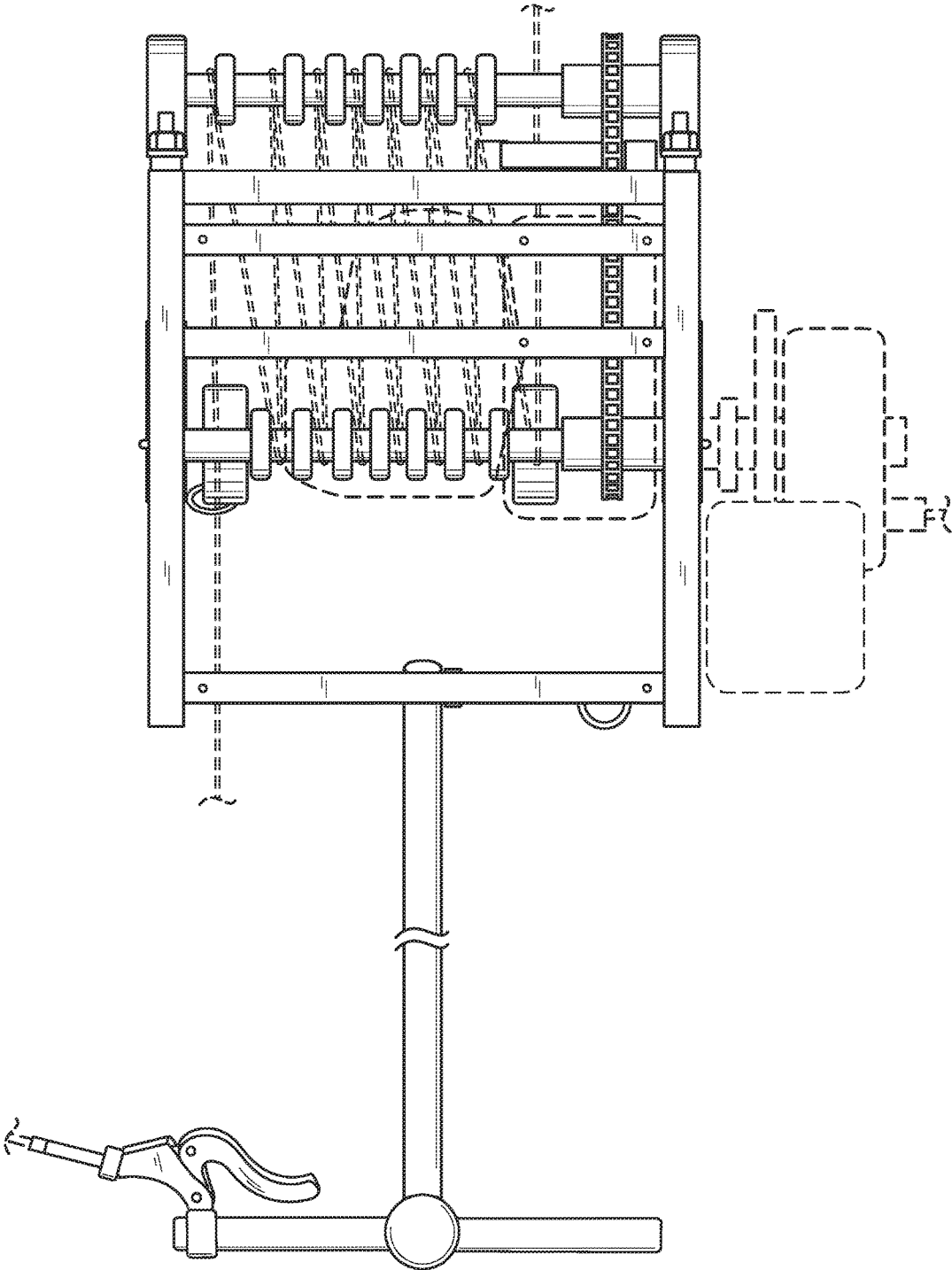


FIG. 2

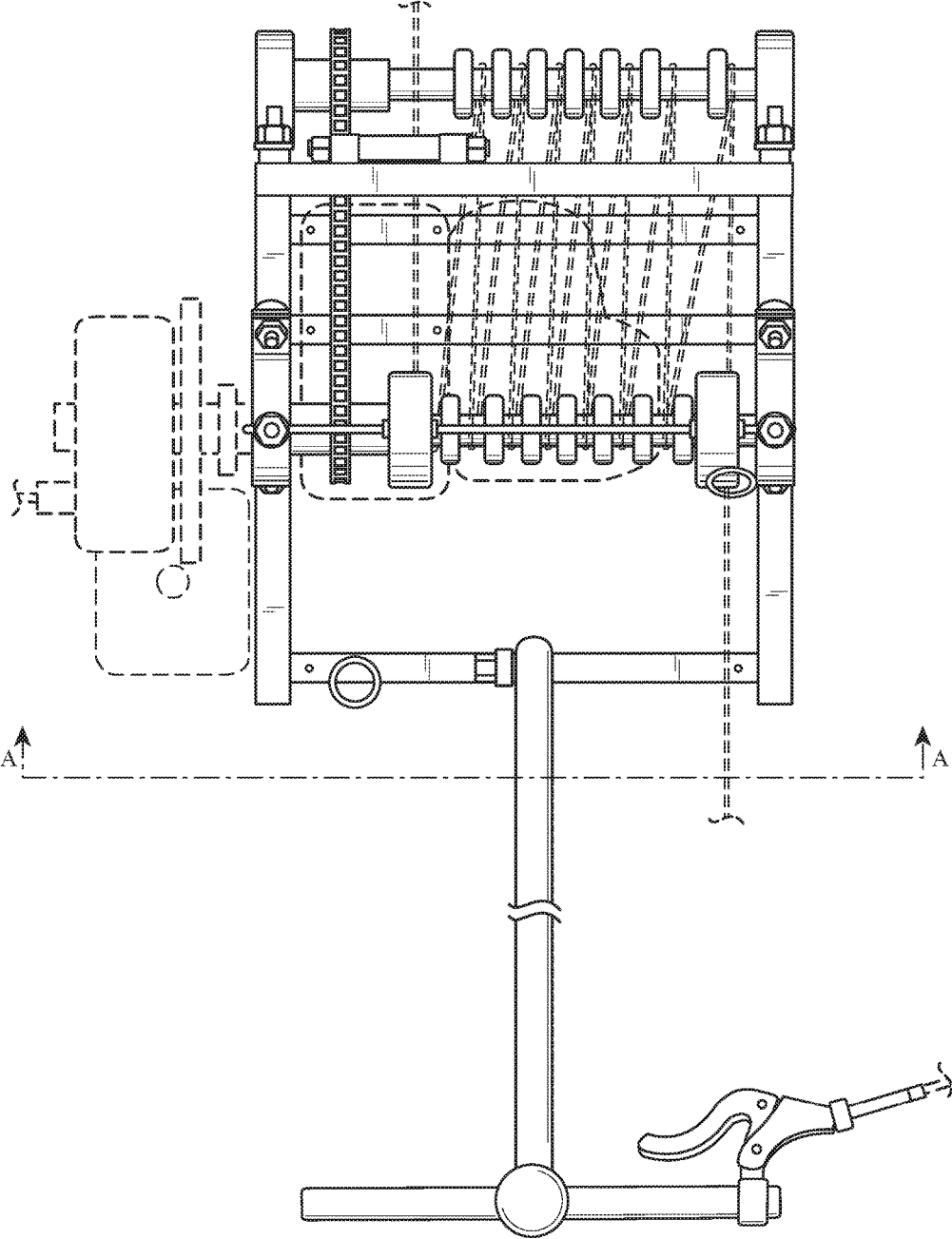


FIG. 3

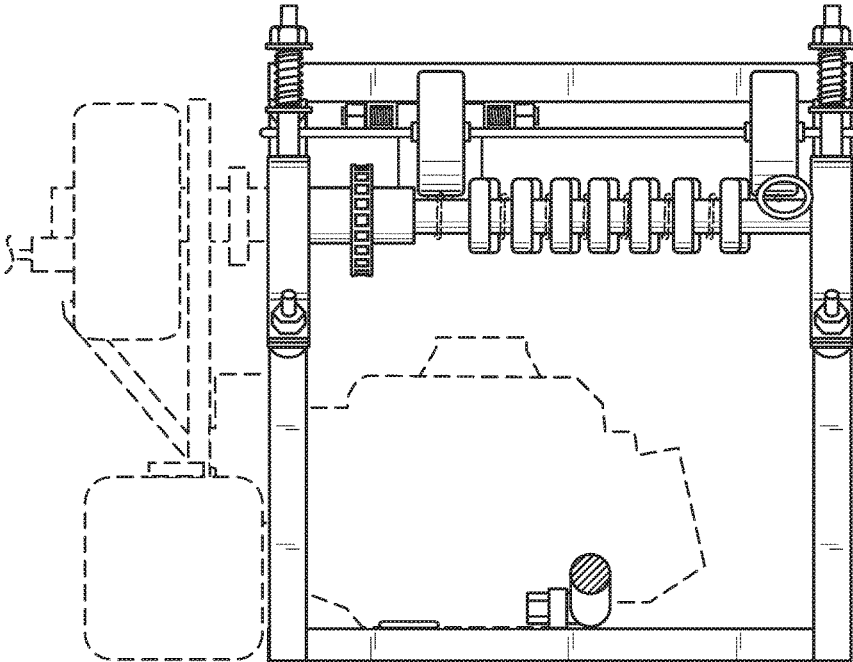


FIG. 4

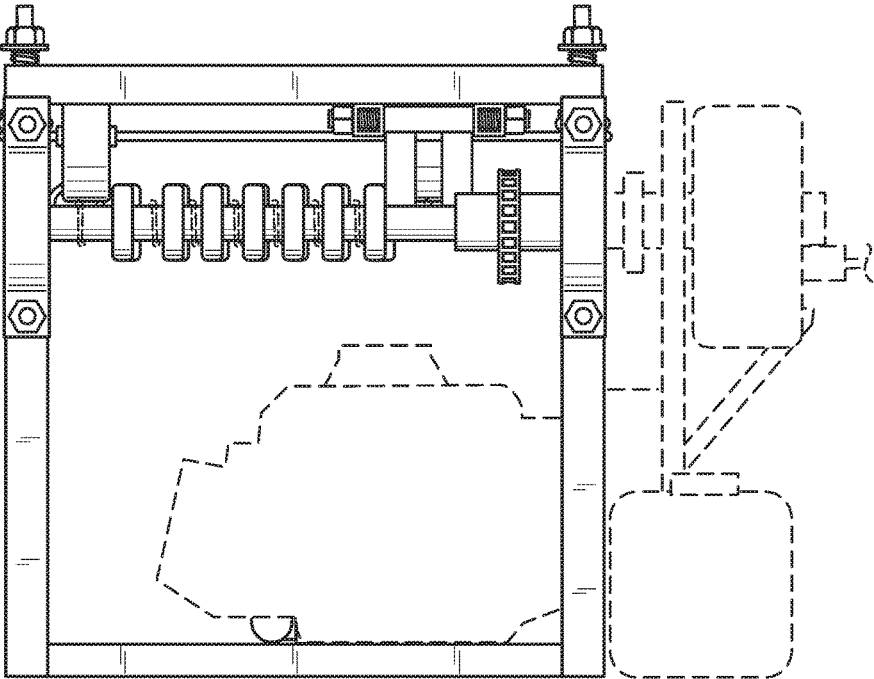


FIG. 5

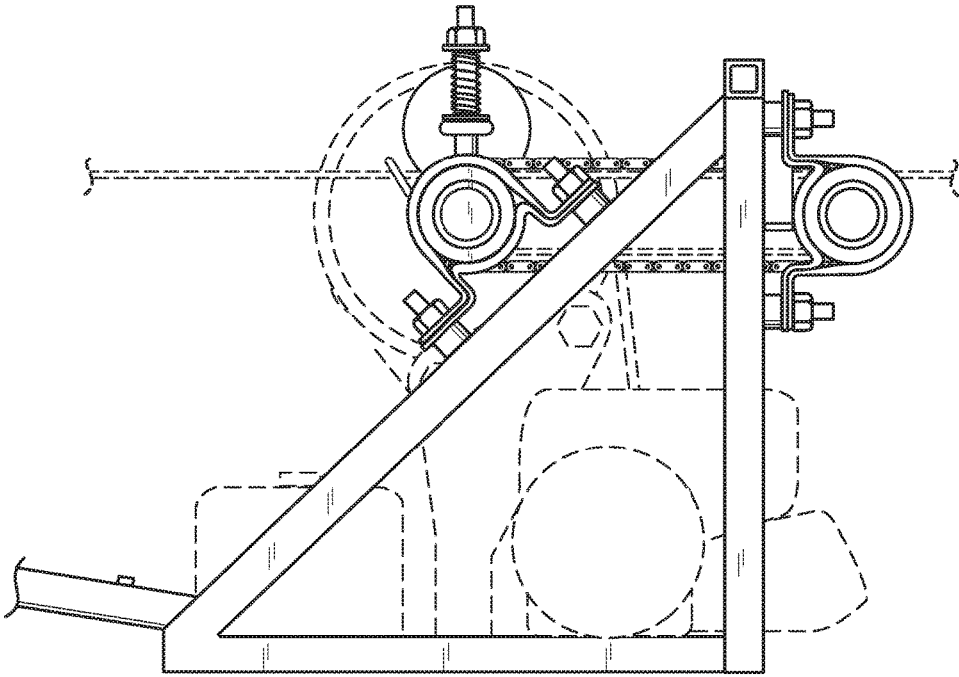


FIG. 6

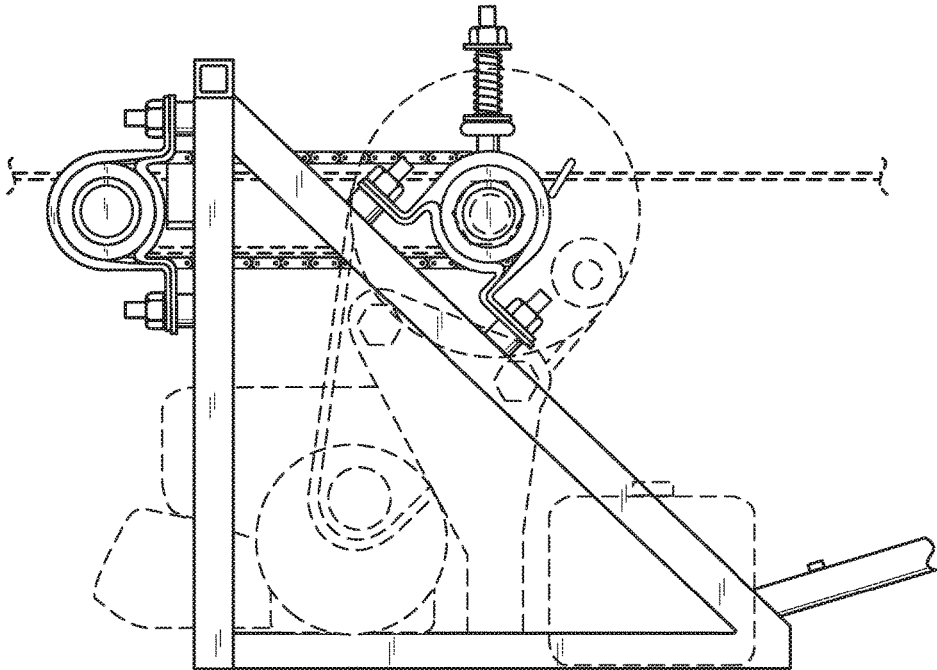


FIG. 7